

# CUBIC ENCLOSURE RANGE

*“Enclosures that offer true versatility and powerful performance in a variety of environmental conditions”*

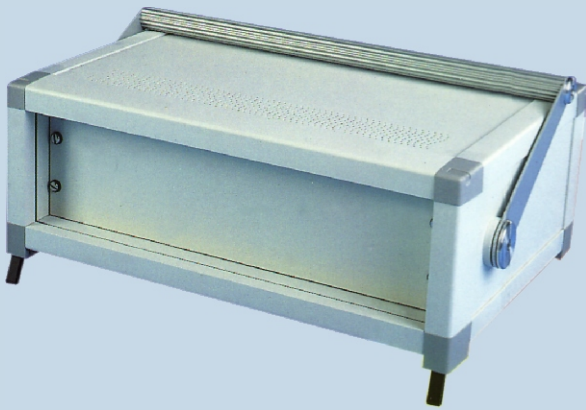
*“Enclosures designed with image in mind, with features that industry needs”*

**You’ve just imagined Cubic, the robust and cost effective new range of modular enclosures from SRS.**

## DESIGNED FOR MANUFACTURERS

The Cubic range offers high levels of performance and versatility with up-to-the-minute styling. This unusual blend of function and aesthetics maximises the appeal of Cubic to manufacturers, retailers and end users alike. The enclosures are designed for desk top, wall mounting and floor standing use. Safety-compliant carrying handles can be added and all desk top units have built-in tip-up feet to allow angled display. The enclosures are suitable for a wide variety of equipment type standards and environmental conditions. They can be specified in many different configurations, making it viable to construct purpose-built units without blanking panels. The key features of the range are compliance with IP55, variable EMC screening, integral earth bonding up to class 1, integral housing flexibility and rugged construction for maximum durability. A wide range of sizes are available from stock, covering heights from 3U to 21U and depths from 300mm to 500mm. However, thanks to Cubic’s modular construction, requirements for other sizes can easily be met.

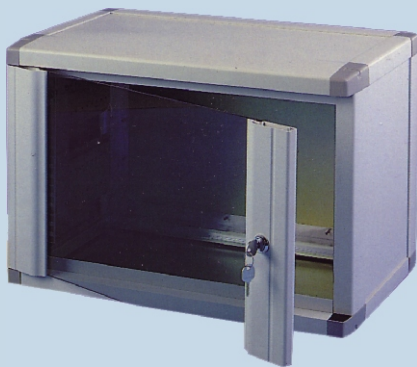
CUBIC SERIES



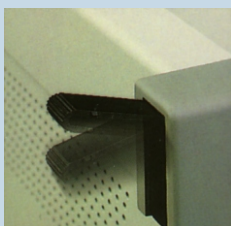
**Cubic Desk Top Enclosure**



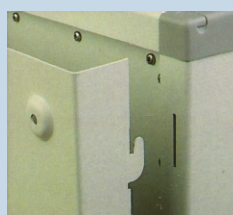
**Cubic Tower Enclosure**



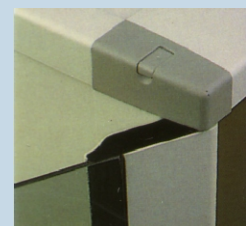
**Cubic Wall Enclosure**



**Desk top tip-up feet**



**Wall enclosure mounting frame**



**180° door opening**